

Argo_Indian_Profiles_1999-2022

Reiner Schlitzer, Alfred Wegener Institute, Bremerhaven, GERMANY (Reiner.Schlitzer@awi.de)

This data collection contains 515,349 Argo profiles for the Indian Ocean covering the period from October 1999 until February 2022.

The Argo netCDF files were downloaded from <ftp://ftp.ifremer.fr/ifremer/argo/dac/> on February 28 2022, and were imported using the ODV Argo netCDF profile importer. The list of data variables follows below.

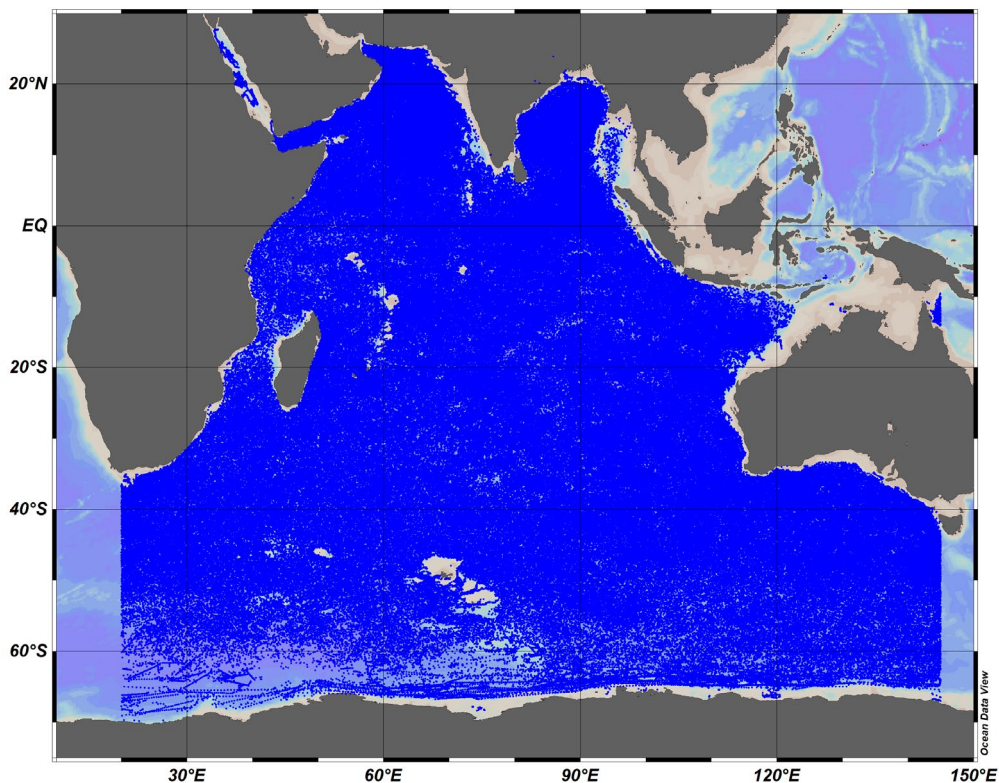
A number of prepared views can be loaded using the *View > Load Views* option in ODV or webODV. Typically, views take a few seconds to load, however, some views involve very large numbers of stations and may take longer. Some example views are shown below.

When using these data please acknowledge Argo as described [here](#).

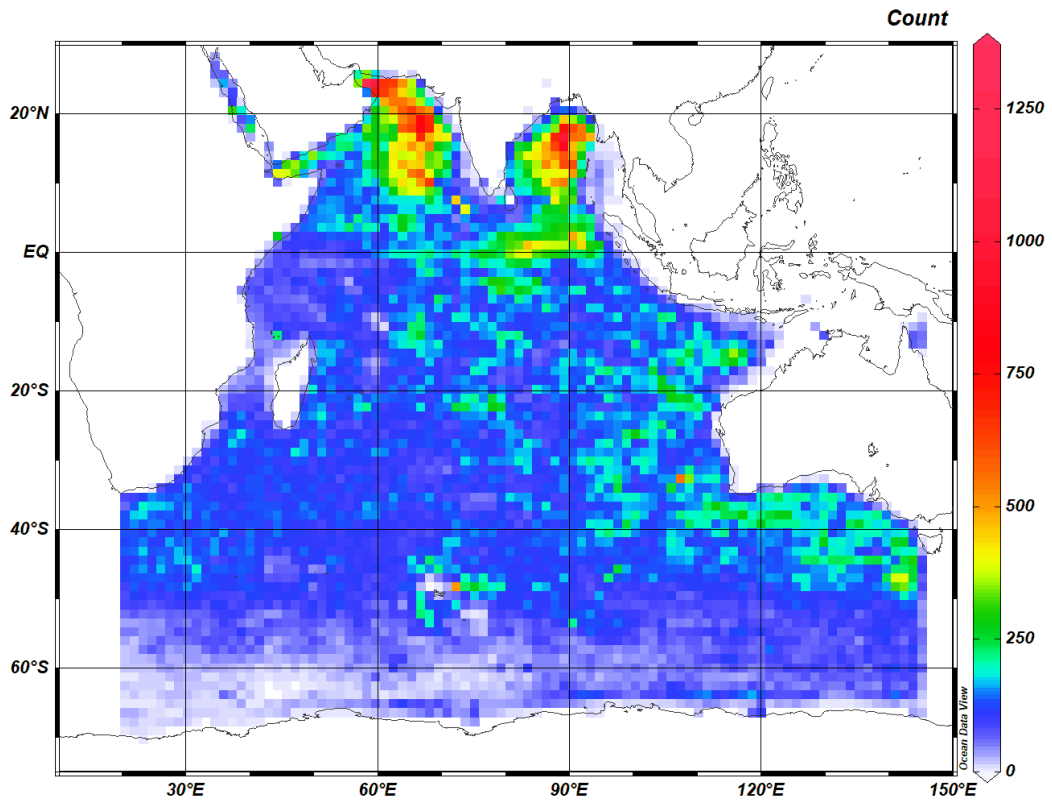
Variables:

1: Pressure (original) [decibar]	PRES Sea water pressure, equals 0 at sea-level
2: Pressure (adjusted) [decibar]	PRES_ADJUSTED Sea water pressure, equals 0 at sea-level
3: Temperature (original) [degrees_Celsius]	TEMP Sea temperature in-situ ITS-90 scale
4: Temperature (adjusted) [degrees_Celsius]	TEMP_ADJUSTED Sea temperature in-situ ITS-90 scale
5: Practical Salinity (original) [psu]	PSAL Practical salinity
6: Practical Salinity (adjusted) [psu]	PSAL_ADJUSTED Practical salinity

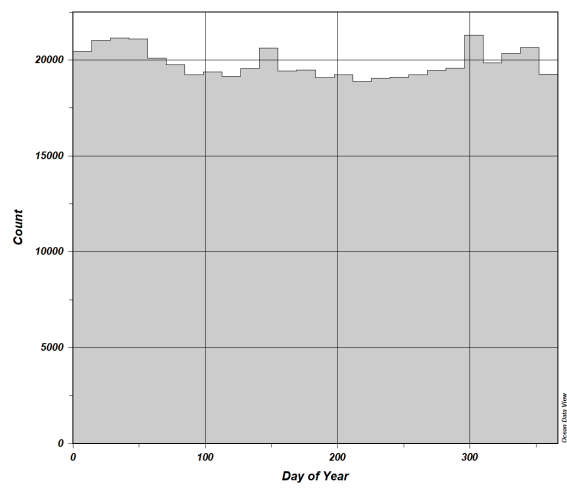
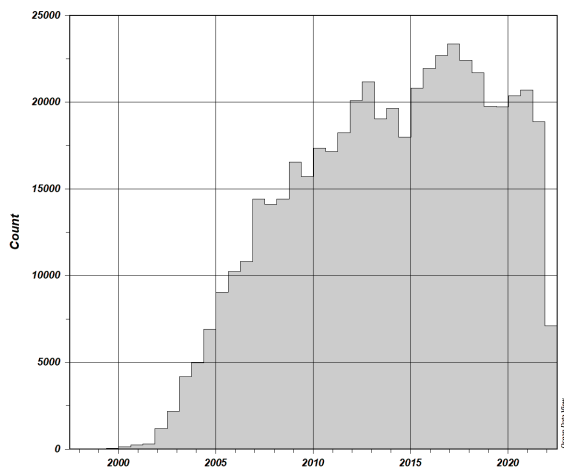
Station Map:



Spatial Coverage:

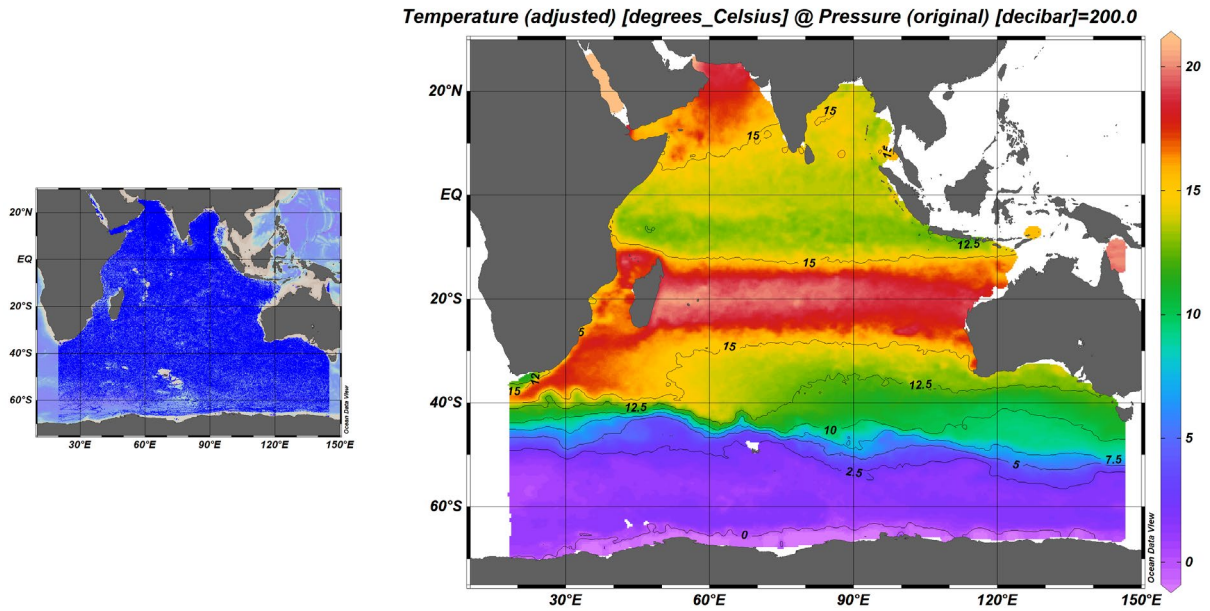


Temporal Coverage:

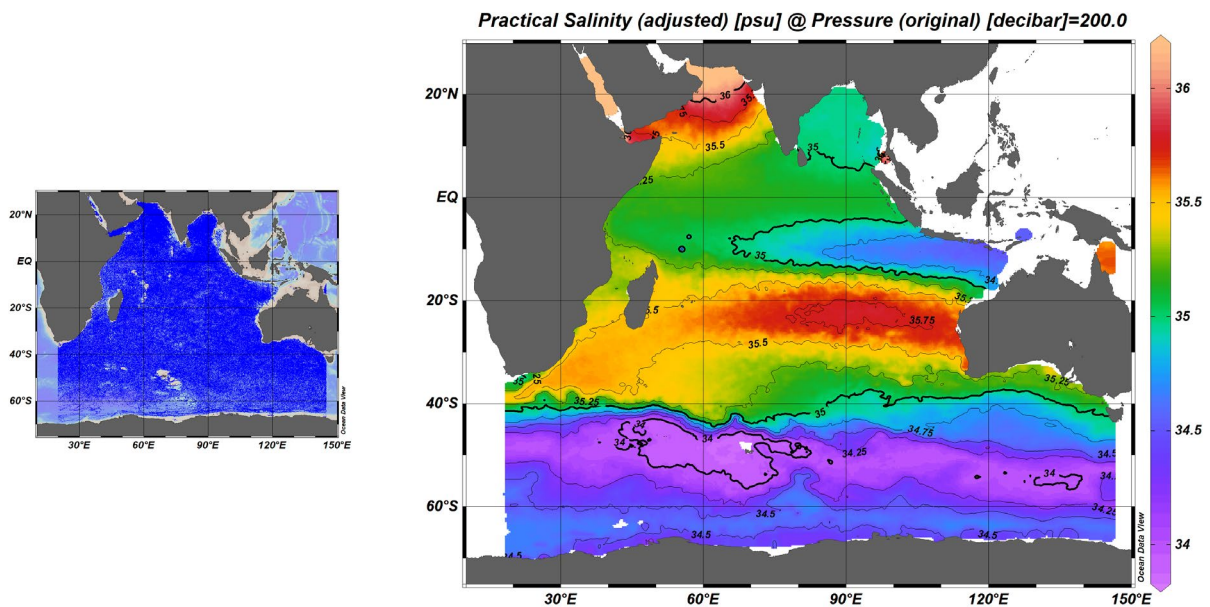


Example Views:

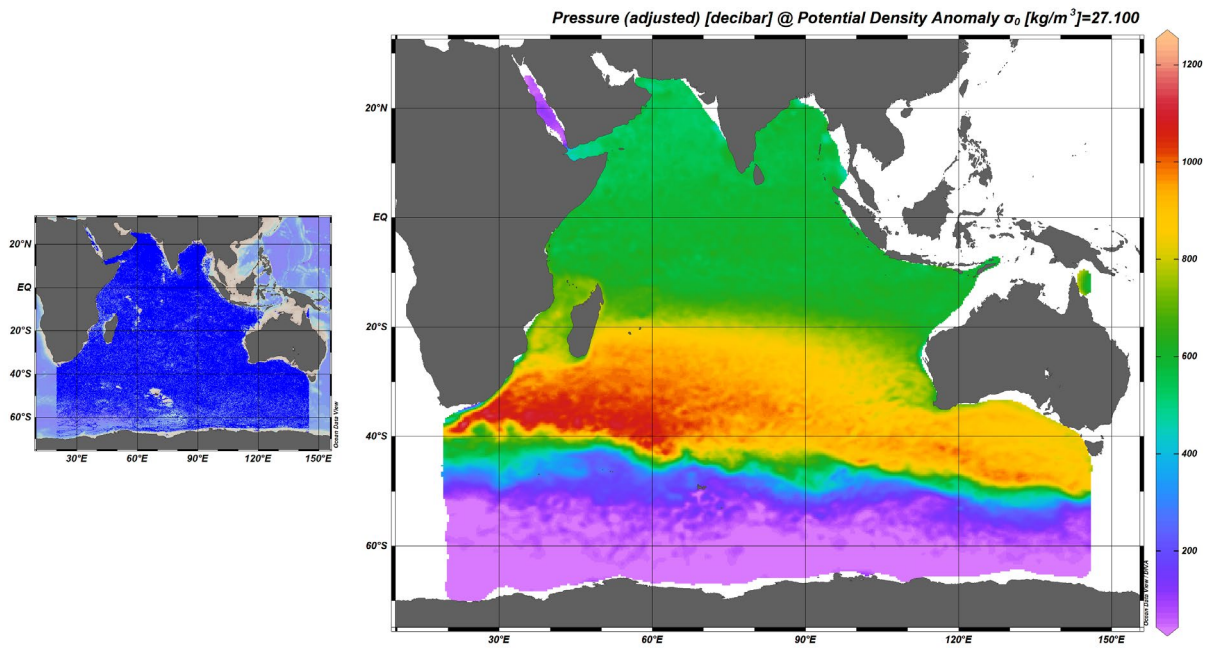
Temperature_at_200db: Annual average temperature at 200 db.



Salinity_at_200db: Annual average salinity at 200 db.



Pressure_at_sigma0_27-1_january: Pressure on the $\sigma_0=27.1$ isopycnal for January.



T-S_upper_50db_timeseries_ArabianSea: Temporal evolution of temperature and salinity in the upper 50 db of the water column in the Arabian Sea.

