

Argo_Atlantic_Profiles_1997-2022

Reiner Schlitzer, Alfred Wegener Institute, Bremerhaven, GERMANY (Reiner.Schlitzer@awi.de)

This data collection contains 758,329 Argo profiles for the Atlantic Ocean covering the period from July 1997 until February 2022.

The Argo netCDF files were downloaded from <ftp://ftp.ifremer.fr/ifremer/argo/dac/> on February 28 2022, and were imported using the ODV Argo netCDF profile importer. The list of data variables follows below.

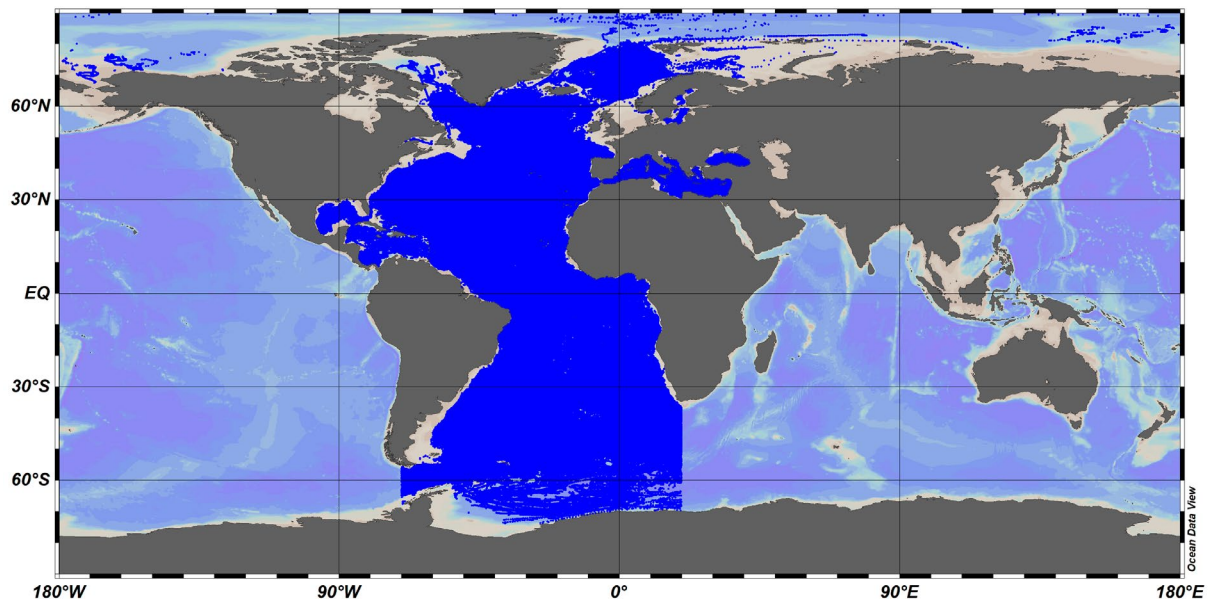
A number of prepared views can be loaded using the *View > Load Views* option in ODV or webODV. Typically, views take a few seconds to load, however, some views involve very large numbers of stations and may take longer. Some example views are shown below.

When using these data please acknowledge Argo as described [here](#).

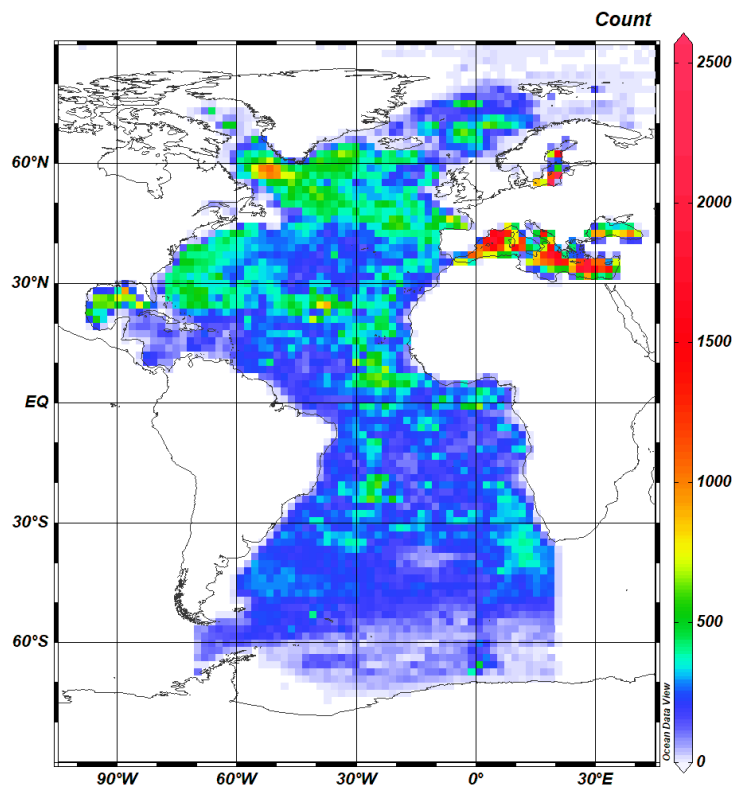
Variables:

1: Pressure (original) [decibar]	PRES Sea water pressure, equals 0 at sea-level
2: Pressure (adjusted) [decibar]	PRES_ADJUSTED Sea water pressure, equals 0 at sea-level
3: Temperature (original) [degrees_Celsius]	TEMP Sea temperature in-situ ITS-90 scale
4: Temperature (adjusted) [degrees_Celsius]	TEMP_ADJUSTED Sea temperature in-situ ITS-90 scale
5: Practical Salinity (original) [psu]	PSAL Practical salinity
6: Practical Salinity (adjusted) [psu]	PSAL_ADJUSTED Practical salinity

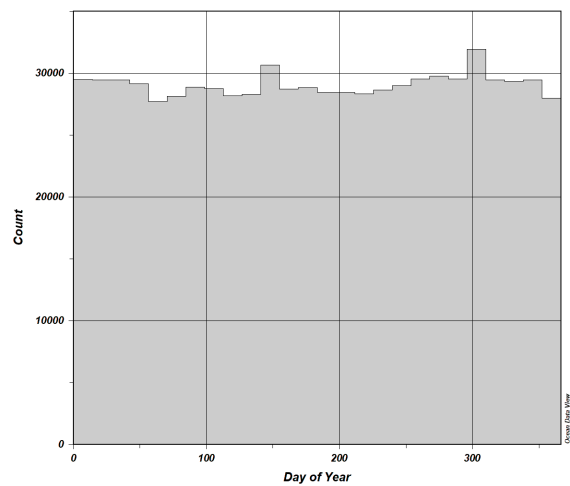
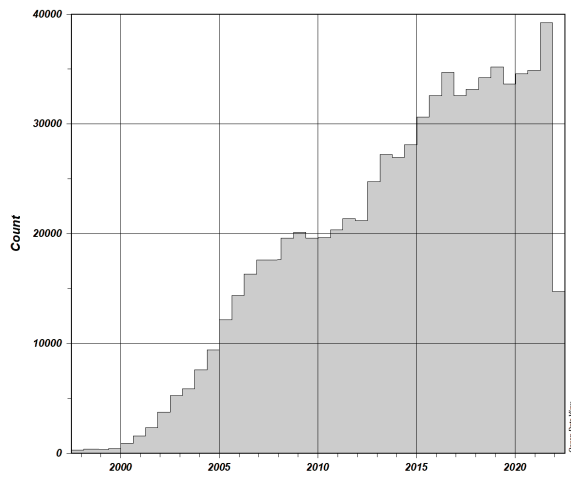
Station Map:



Spatial Coverage:

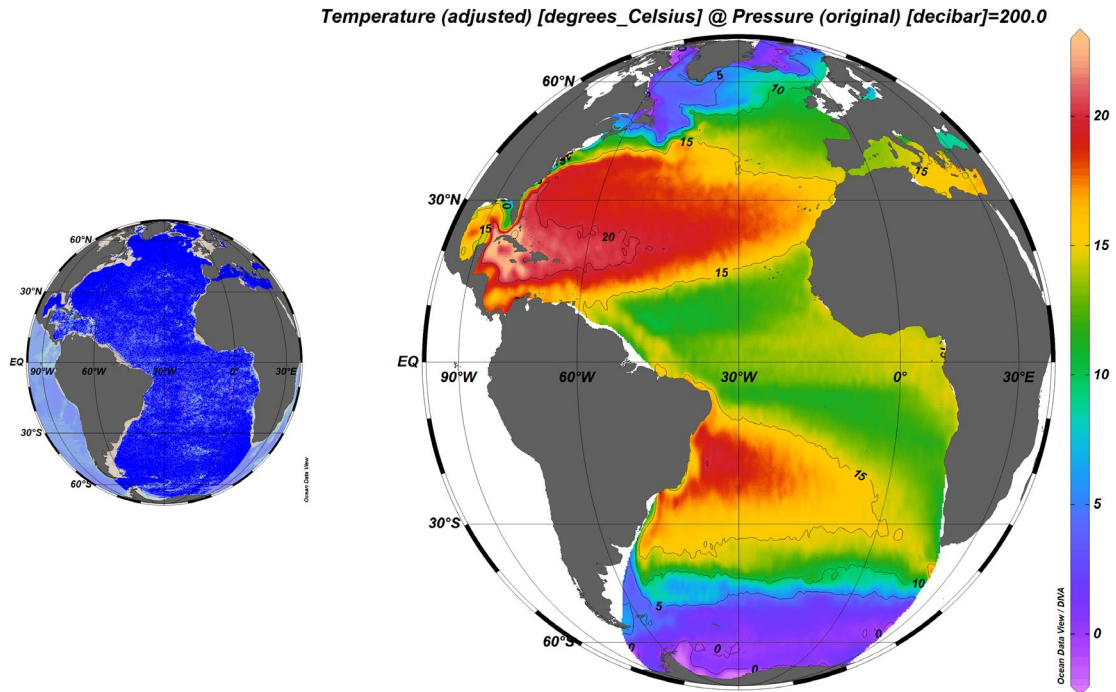


Temporal Coverage:

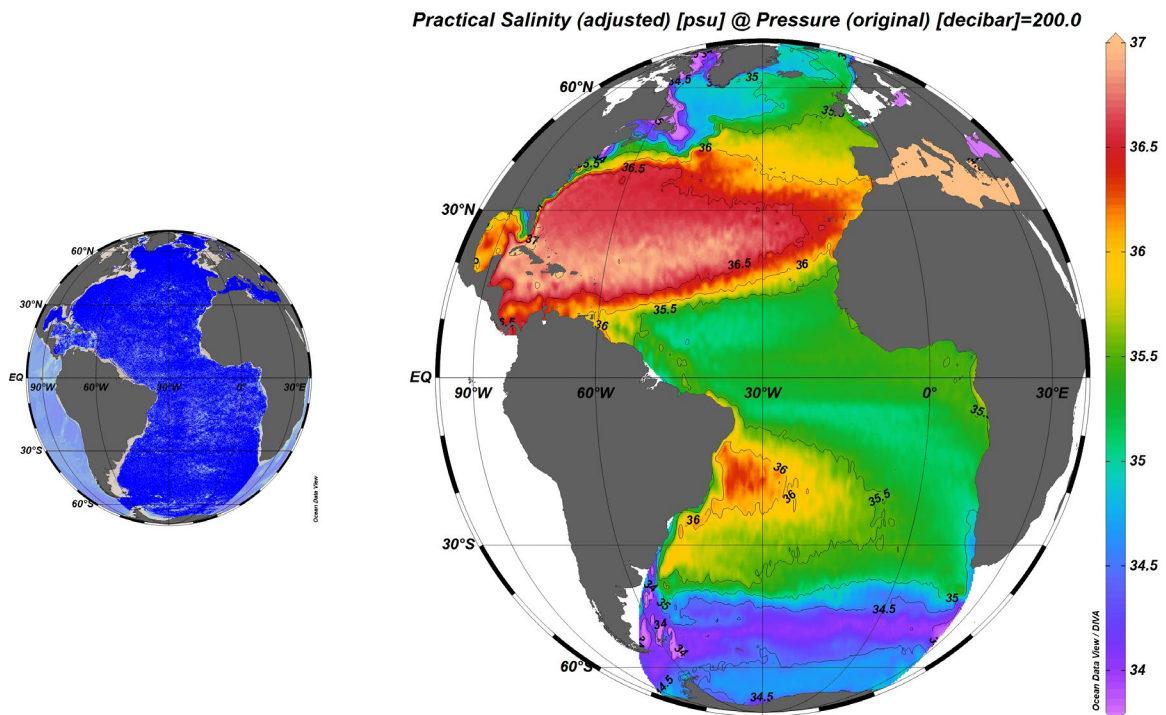


Example Views:

Temperature_at_200db: Annual average temperature at 200 db.



Salinity_at_200db: Annual average salinity at 200 db.



DynHeight-1500db_at_250db_NAtl: Annual average dynamic height relative to 1500 db at 250 db in the North Atlantic.

